

GSC 3089 1027

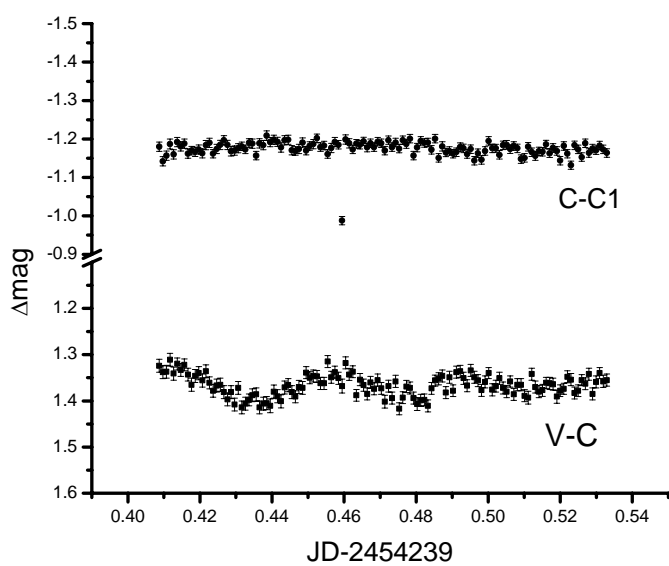
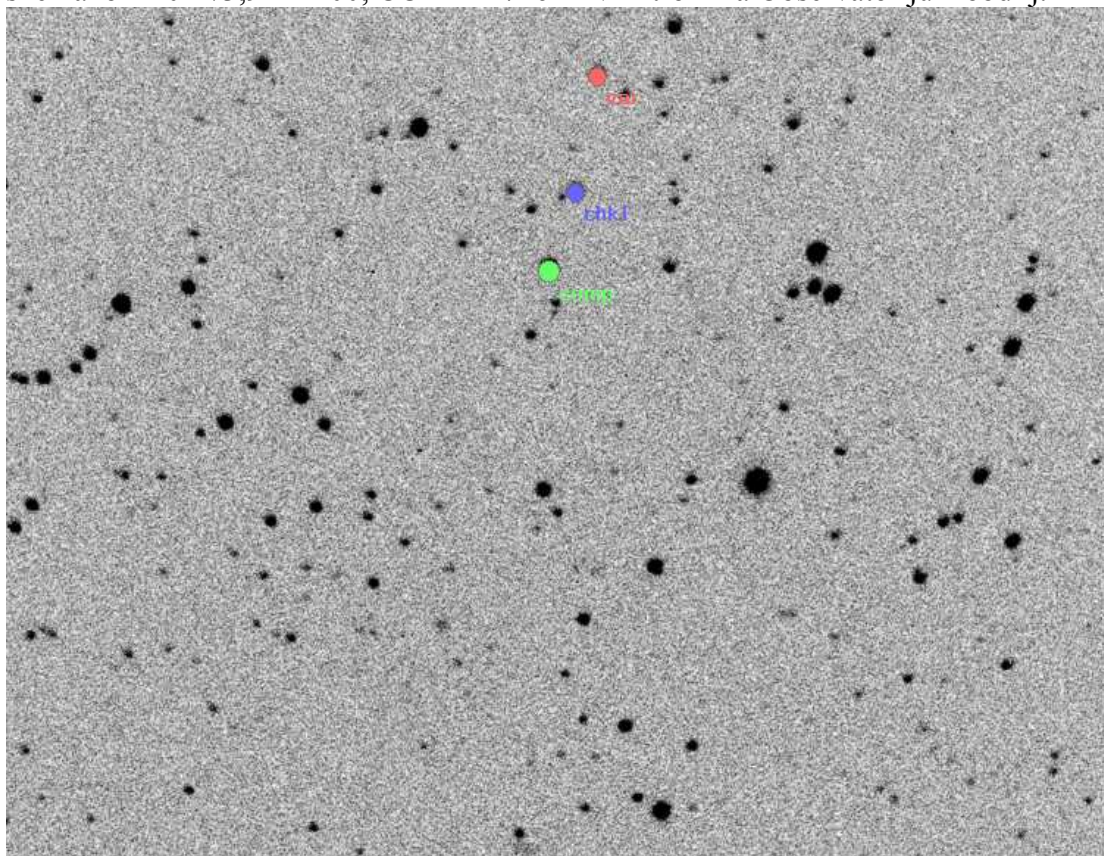
Teja Fabjan

Primož Kuk

Matej Mihelčič

Nikolaj Štritof

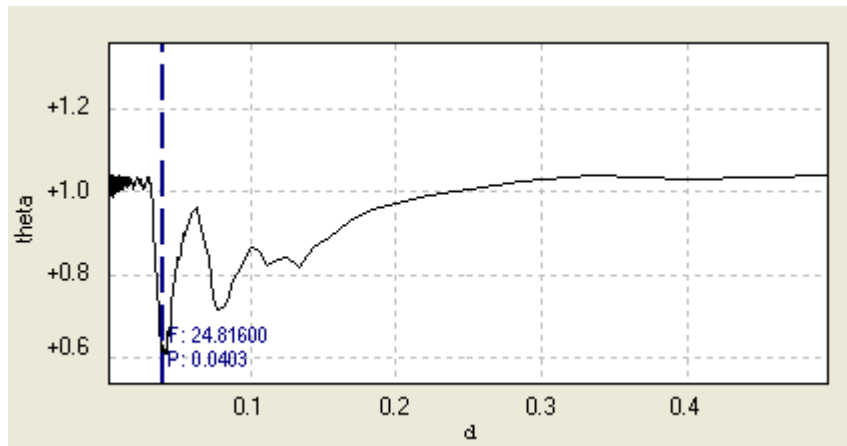
snemano z 10" f/3,9 LX200, CCD MX716 in V filtrom na Observatoriju Kobdilj.



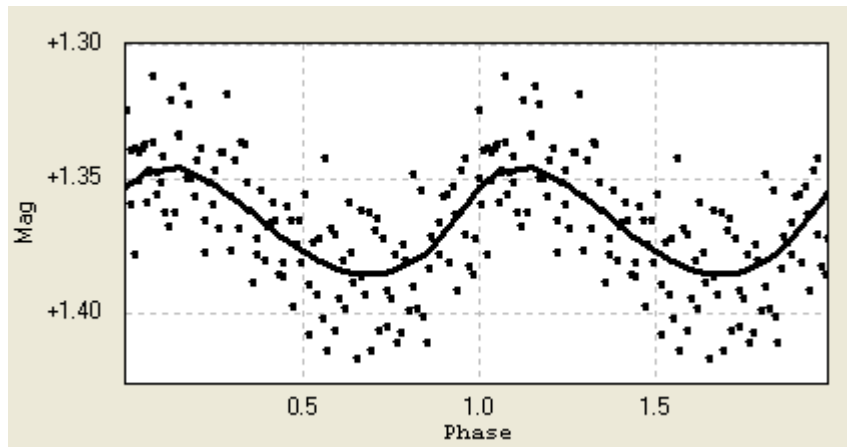
GSC 3089 1027 = V

C GSC 3089 1137 12.1 mag

C1 GSC 3089 0673 13.3 mag



PDM Peranso



$\Delta m = 0.04$ mag.

$P = 0.04038 \pm 0.0024$ d

Epocha JD = 2454239.4087

Epocha HJD = 2454239.4119

JD V-C s1 V-C1 s2 C-C1 s3

Aperture: 4, Filter: 80.00, JD: geocentric

2454239.40873	1.324	0.014	0.144	0.017	-1.180	0.012
2454239.40972	1.338	0.014	0.196	0.017	-1.142	0.012
2454239.41072	1.337	0.014	0.180	0.017	-1.157	0.012
2454239.41171	1.311	0.014	0.124	0.018	-1.187	0.013
2454239.41271	1.341	0.014	0.181	0.017	-1.160	0.012
2454239.41370	1.320	0.013	0.128	0.016	-1.192	0.012
2454239.41470	1.333	0.014	0.152	0.017	-1.181	0.012
2454239.41569	1.322	0.013	0.134	0.016	-1.188	0.012
2454239.41669	1.343	0.014	0.181	0.017	-1.162	0.012
2454239.41767	1.365	0.014	0.195	0.016	-1.170	0.011
2454239.41867	1.346	0.014	0.179	0.017	-1.167	0.012
2454239.41966	1.340	0.014	0.167	0.017	-1.173	0.012
2454239.42066	1.356	0.014	0.193	0.017	-1.163	0.012
2454239.42166	1.336	0.014	0.152	0.017	-1.184	0.012
2454239.42265	1.361	0.013	0.171	0.016	-1.190	0.012

2454239.42365 1.378 0.014 0.216 0.016 -1.162 0.011
2454239.42464 1.367 0.014 0.193 0.017 -1.174 0.012
2454239.42564 1.365 0.014 0.180 0.017 -1.185 0.012
2454239.42662 1.381 0.014 0.184 0.017 -1.197 0.012
2454239.42763 1.397 0.014 0.212 0.017 -1.185 0.012
2454239.42861 1.381 0.014 0.213 0.017 -1.168 0.012
2454239.42961 1.408 0.014 0.238 0.017 -1.170 0.012
2454239.43060 1.372 0.014 0.196 0.017 -1.176 0.012
2454239.43160 1.414 0.014 0.233 0.016 -1.181 0.011
2454239.43259 1.406 0.014 0.233 0.016 -1.173 0.011
2454239.43358 1.398 0.013 0.208 0.016 -1.190 0.011
2454239.43457 1.388 0.014 0.200 0.017 -1.188 0.012
2454239.43557 1.386 0.014 0.229 0.016 -1.157 0.011
2454239.43656 1.414 0.014 0.225 0.017 -1.189 0.012
2454239.43756 1.406 0.014 0.222 0.017 -1.184 0.012
2454239.43855 1.405 0.014 0.196 0.017 -1.209 0.012
2454239.43955 1.411 0.015 0.219 0.018 -1.192 0.012
2454239.44053 1.380 0.014 0.182 0.017 -1.198 0.012
2454239.44153 1.390 0.014 0.197 0.017 -1.193 0.012
2454239.44252 1.401 0.014 0.223 0.017 -1.178 0.012
2454239.44352 1.371 0.014 0.174 0.017 -1.197 0.012
2454239.44451 1.366 0.014 0.168 0.017 -1.198 0.012
2454239.44551 1.381 0.014 0.210 0.017 -1.171 0.012
2454239.44650 1.391 0.013 0.222 0.016 -1.169 0.011
2454239.44749 1.370 0.014 0.196 0.017 -1.174 0.012
2454239.44850 1.372 0.014 0.181 0.017 -1.191 0.012
2454239.44948 1.339 0.013 0.169 0.016 -1.170 0.011
2454239.45047 1.350 0.013 0.168 0.016 -1.182 0.011
2454239.45147 1.346 0.013 0.159 0.016 -1.187 0.012
2454239.45247 1.347 0.013 0.145 0.016 -1.202 0.011
2454239.45346 1.362 0.013 0.183 0.016 -1.179 0.011
2454239.45446 1.362 0.013 0.179 0.016 -1.183 0.011
2454239.45545 1.315 0.013 0.154 0.016 -1.161 0.011
2454239.45644 1.349 0.013 0.172 0.016 -1.177 0.012
2454239.45743 1.338 0.013 0.146 0.016 -1.192 0.012
2454239.45843 1.351 0.013 0.166 0.016 -1.185 0.011
2454239.45942 1.368 0.015 0.380 0.017 -0.988 0.011
2454239.46042 1.318 0.013 0.119 0.016 -1.199 0.012
2454239.46141 1.343 0.013 0.154 0.016 -1.189 0.012
2454239.46240 1.337 0.013 0.164 0.016 -1.173 0.011
2454239.46339 1.388 0.013 0.200 0.016 -1.188 0.011
2454239.46439 1.354 0.013 0.169 0.016 -1.185 0.011
2454239.46538 1.366 0.013 0.172 0.016 -1.194 0.011
2454239.46638 1.385 0.013 0.207 0.016 -1.178 0.011
2454239.46736 1.360 0.013 0.171 0.016 -1.189 0.011
2454239.46836 1.374 0.013 0.195 0.016 -1.179 0.011
2454239.46935 1.355 0.013 0.162 0.016 -1.193 0.011
2454239.47035 1.373 0.013 0.184 0.016 -1.189 0.011
2454239.47134 1.402 0.014 0.232 0.016 -1.170 0.011
2454239.47233 1.368 0.013 0.171 0.016 -1.197 0.011

2454239.47332 1.394 0.013 0.215 0.016 -1.179 0.011
2454239.47432 1.358 0.013 0.167 0.016 -1.191 0.011
2454239.47531 1.417 0.013 0.242 0.016 -1.175 0.011
2454239.47631 1.393 0.013 0.196 0.016 -1.197 0.011
2454239.47730 1.369 0.013 0.182 0.016 -1.187 0.011
2454239.47829 1.372 0.013 0.171 0.016 -1.201 0.011
2454239.47928 1.394 0.013 0.237 0.016 -1.157 0.011
2454239.48028 1.407 0.014 0.229 0.016 -1.178 0.011
2454239.48127 1.399 0.013 0.204 0.016 -1.195 0.011
2454239.48227 1.398 0.013 0.208 0.016 -1.190 0.011
2454239.48325 1.411 0.013 0.220 0.016 -1.191 0.011
2454239.48425 1.373 0.013 0.201 0.016 -1.172 0.011
2454239.48524 1.356 0.012 0.155 0.015 -1.201 0.011
2454239.48624 1.352 0.013 0.201 0.016 -1.151 0.011
2454239.48723 1.346 0.013 0.165 0.016 -1.181 0.012
2454239.48822 1.382 0.013 0.217 0.016 -1.165 0.011
2454239.48921 1.349 0.013 0.180 0.016 -1.169 0.011
2454239.49021 1.378 0.013 0.216 0.016 -1.162 0.011
2454239.49120 1.338 0.013 0.172 0.016 -1.166 0.011
2454239.49220 1.336 0.013 0.157 0.016 -1.179 0.011
2454239.49319 1.351 0.013 0.175 0.016 -1.176 0.011
2454239.49418 1.367 0.013 0.206 0.016 -1.161 0.011
2454239.49517 1.334 0.013 0.160 0.016 -1.174 0.011
2454239.49617 1.349 0.013 0.205 0.016 -1.144 0.011
2454239.49716 1.356 0.013 0.193 0.016 -1.163 0.011
2454239.49816 1.377 0.013 0.231 0.016 -1.146 0.011
2454239.49914 1.359 0.013 0.190 0.016 -1.169 0.011
2454239.50014 1.340 0.012 0.145 0.015 -1.195 0.011
2454239.50113 1.376 0.013 0.200 0.016 -1.176 0.011
2454239.50213 1.368 0.013 0.192 0.015 -1.176 0.010
2454239.50312 1.351 0.013 0.192 0.016 -1.159 0.011
2454239.50411 1.372 0.013 0.188 0.016 -1.184 0.011
2454239.50510 1.380 0.013 0.195 0.016 -1.185 0.011
2454239.50610 1.358 0.012 0.184 0.015 -1.174 0.011
2454239.50709 1.386 0.013 0.204 0.016 -1.182 0.011
2454239.50809 1.365 0.013 0.189 0.016 -1.176 0.011
2454239.50909 1.365 0.013 0.217 0.016 -1.148 0.011
2454239.51007 1.389 0.013 0.238 0.016 -1.151 0.011
2454239.51107 1.393 0.014 0.213 0.016 -1.180 0.011
2454239.51206 1.342 0.013 0.176 0.016 -1.166 0.011
2454239.51306 1.370 0.013 0.214 0.016 -1.156 0.011
2454239.51405 1.380 0.013 0.212 0.016 -1.168 0.011
2454239.51504 1.377 0.013 0.210 0.016 -1.167 0.011
2454239.51603 1.361 0.012 0.175 0.015 -1.186 0.011
2454239.51703 1.362 0.013 0.199 0.016 -1.163 0.011
2454239.51802 1.364 0.013 0.187 0.016 -1.177 0.011
2454239.51902 1.391 0.014 0.222 0.016 -1.169 0.011
2454239.52000 1.378 0.013 0.234 0.016 -1.144 0.011
2454239.52099 1.374 0.012 0.192 0.015 -1.182 0.011
2454239.52199 1.348 0.013 0.186 0.016 -1.162 0.011

2454239.52299 1.354 0.013 0.222 0.016 -1.132 0.011
2454239.52398 1.383 0.013 0.199 0.016 -1.184 0.011
2454239.52498 1.378 0.013 0.205 0.016 -1.173 0.011
2454239.52596 1.355 0.012 0.202 0.015 -1.153 0.011
2454239.52696 1.363 0.013 0.174 0.016 -1.189 0.011
2454239.52795 1.342 0.013 0.178 0.016 -1.164 0.011
2454239.52895 1.385 0.013 0.210 0.016 -1.175 0.011
2454239.52994 1.359 0.013 0.188 0.016 -1.171 0.011
2454239.53093 1.340 0.012 0.157 0.015 -1.183 0.011
2454239.53192 1.358 0.013 0.185 0.016 -1.173 0.011
2454239.53292 1.355 0.013 0.191 0.016 -1.164 0.011